



About FYRSTA INNOVATIONS

We are a group of **professional engineers** of various specialization, coming together to provide a niche combination of **Medical Engineering** with innovative products that seek to address the critical issue for many humans '**The Chronic Pain**' which not only hampers their physical condition but also psychological health.

Fyrsta Innovations has come up with a **portable medical device** 'ReLive' for Chronic Pain Management.

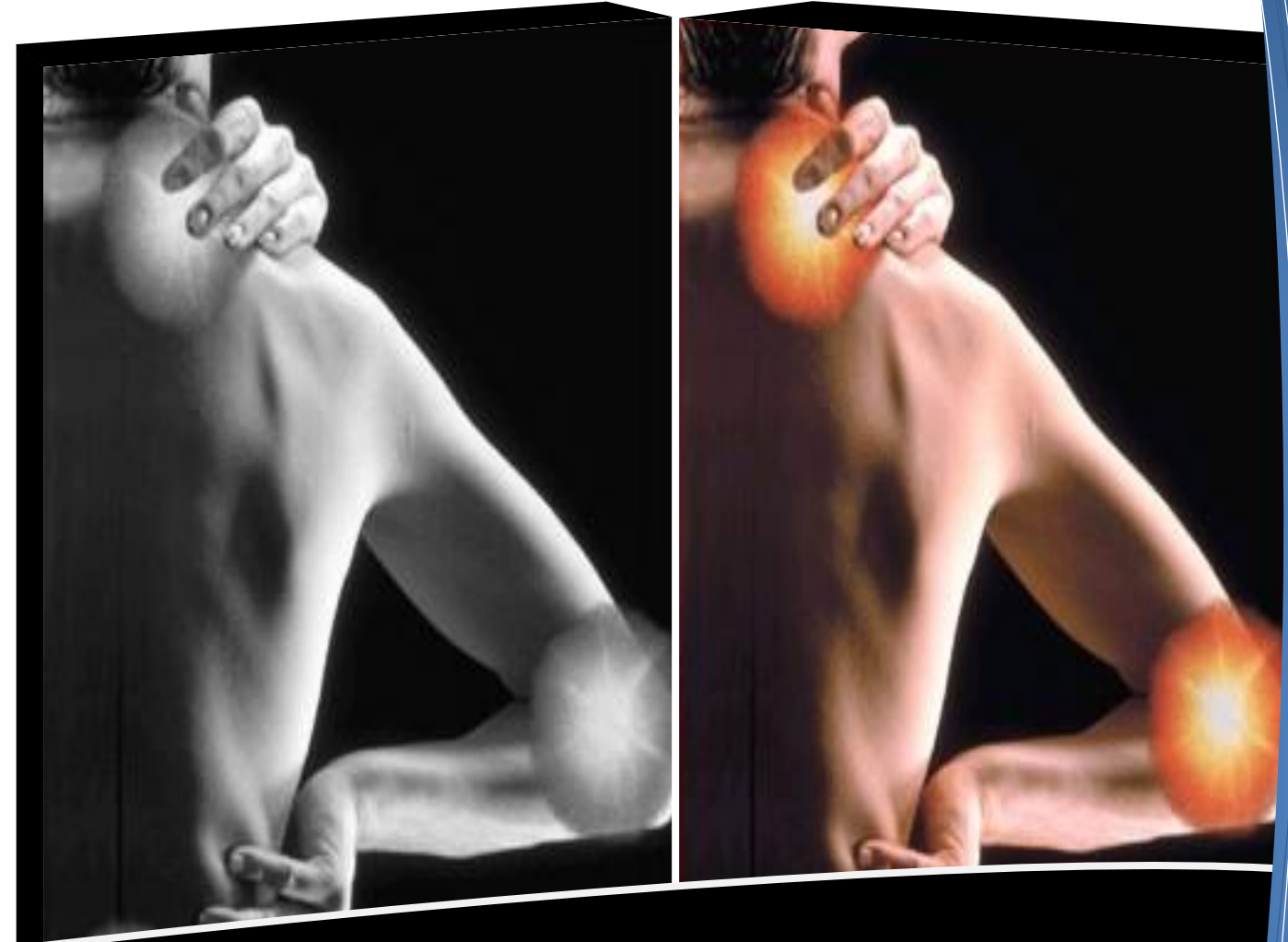
We offer a **unique combination** of cost driven and value driven product 'ReLive' for the patients suffering the endless trauma of various types of chronic pain.

The concept was conceived in **late 2010**. Considerable time has been spent in understanding market and developing the product and conducting trials.

ReLive is designed as a customizable product with **unique customer support schema**. The product is designed and phased in a manner to minimize operational cost and at the same time provide an excellent health care product and service to its customer.

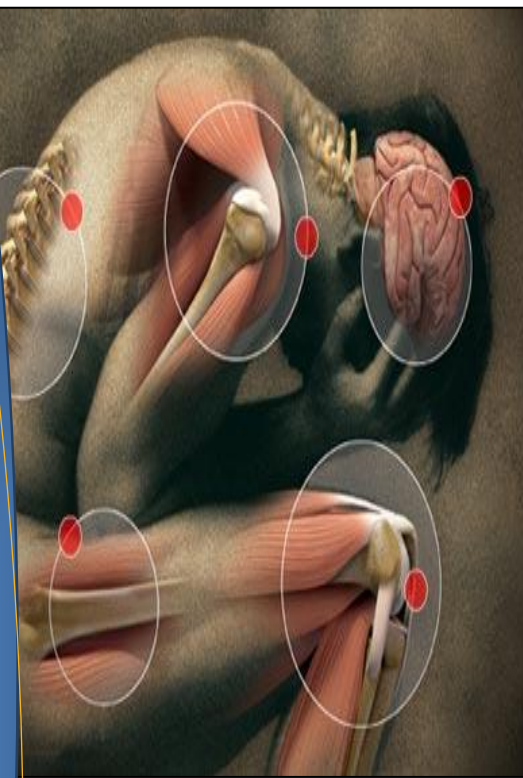
Fyrsta Innovations (India) Private Limited
23/ O. 7A, Thiru Nagar
Dhanalakshmpuram (North),
Coimbatore - 641005
Tamil Nadu, India.
(Tel) +91 - 422 - 438 - 0026
E-mail: support@fyrsta.org
Website: www.fyrsta.org

SALES / SUPPORT HOTLINE: +91 95 000 777 42



Relieving **PAIN**

Reviving **LIVES**



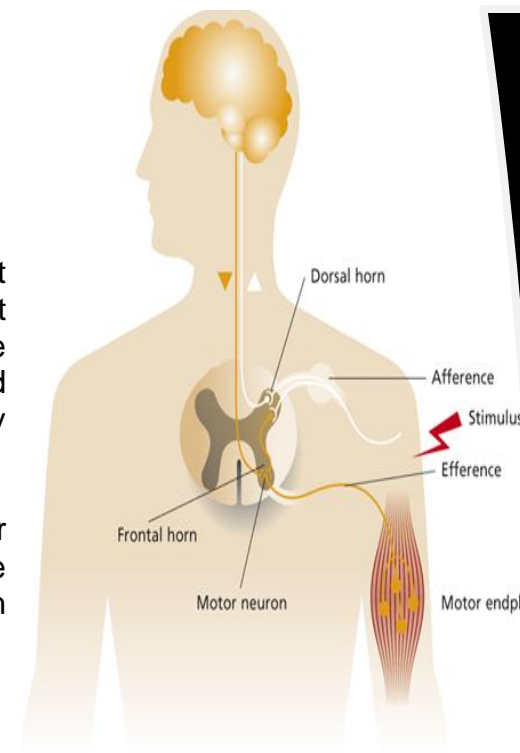
Are you in PAIN?

"Pain is an unpleasant sensory and emotional experience associated with actual or potential tissue damage, or described in terms of such damage."

-The International Association for the Study of Pain

Pain is the most common reason that people seek medical attention. But pain is actually hard to define because it's a subjective sensation. It is caused due to unusual change in the body caused by some damage.

Even in the absence of damage or after its cure. There may no longer be a physical cause of pain, but the pain response is the same.



"KNOW YOURSELF OF WHAT YOU WANT TO GET RID OF..."

A TECHNOLOGY THAT HELPS YOU FORGET PAIN...



Why ReLive?

- Safe & effective
- Clinically-proven treatment
- Easy to use: Apply where it hurts, whenever it hurts
- Drug-free, odour-free
- Small size, compact for use
- Lowest cost-per-use options for pain relief

ReLive Models Available*

- ReLive E
- ReLive NL
- ReLive NMV
- ReLive NML
- ReLive NMVL
- ReLive – Stroke
- ReLive – Ultimate

*Models are customized as per patient's need!



ReLive Applications

- ARTHRITIS
- DIABETIC NEUROPATHY
- LOW BACK PAIN & KNEE PAIN
- STROKE PATIENTS
- SPORTS & HEALTH
- PAIN REHABILITATION
- WOUND HEALING

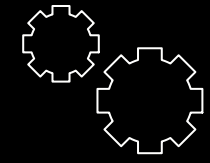
What is ReLive?

The ReLive series of devices is based on the Electrotherapy, Vibrotherapy and Phototherapy for PAIN management.

The Electrotherapy and vibration or Vibrotherapy is in the market for many decades now and till date there are no known side effects of it, thus assuming the device to be safe to use and help patients to recover faster.

Our Edge

- Combinational Therapy
- Licensed Customer Support (Web Based Secure Portal with Knowledge Base)
- Customized on need
- Upgradable systems



CUSTOM SOLUTIONS

Each ReLive is customized by experts for every users. Put simply, each device is unique in its nature. Based on your needs we serve, so that your device is **SPECIALLY MADE FOR YOU!!!**



AT YOUR DOOR STEPS

You can place your ReLive orders through our website <http://www.fyrsta.org>. The device will be delivered to you right at your door steps through our trusted delivery partners. **HASSLE FREE SHOPPING!!!**



WE VALUE YOUR RELATIONSHIP

FYRSTA promises after sales relationship with our customers. You will be receiving e-newsletters, that keep you informed about new product upgrades available for your device.

